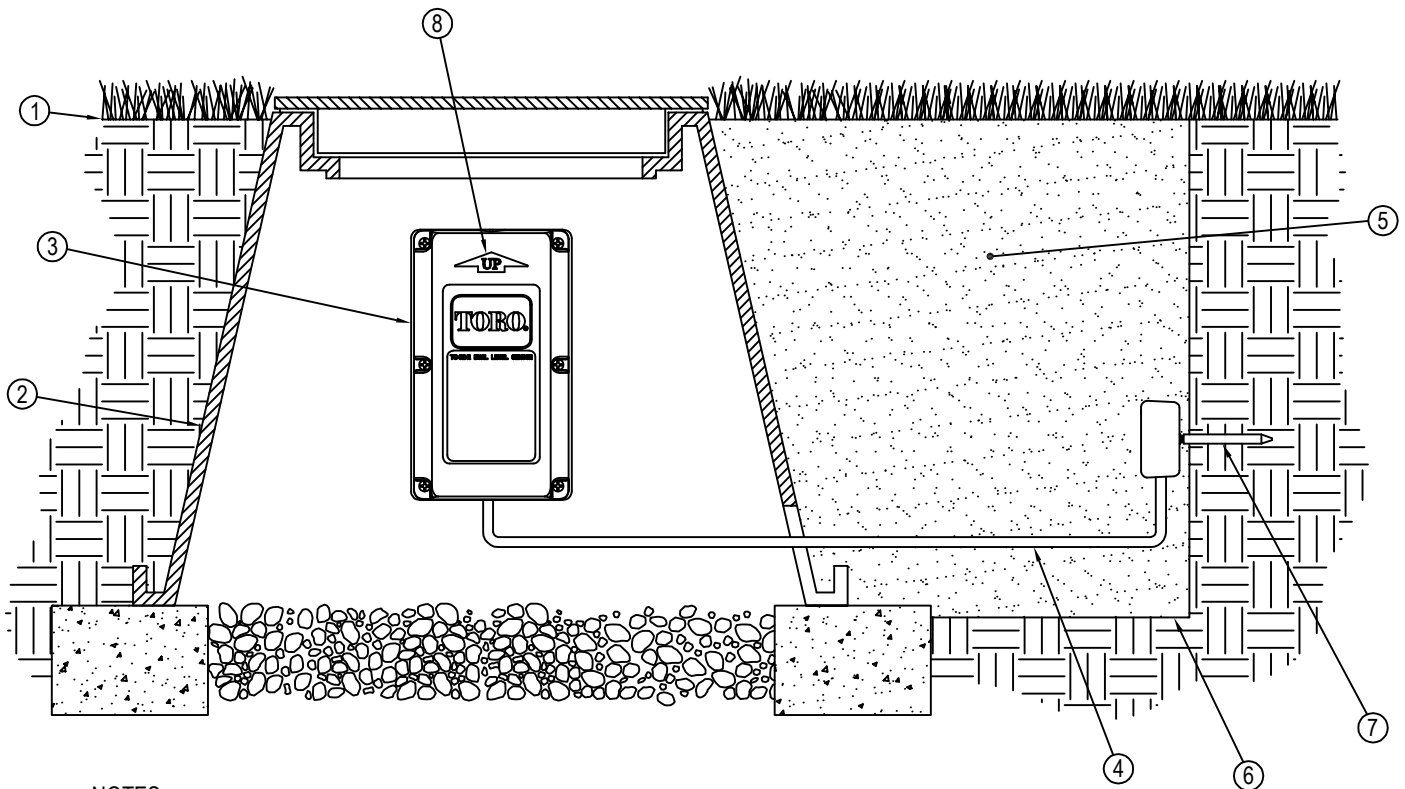




TORO COMPANY - IRRIGATION DIVISION
5825 JASMINE ST.
RIVERSIDE, CA 92504
TOLL FREE: 1-877-345-8676
PHONE: (951) 785-3152
FAX: (951) 359-1870
www.toro.com

LEGEND:

- ① FINISHED GRADE
- ② VALVE BOX
- ③ PRO SERIES SOIL SENSOR
- ④ 3' TETHER
- ⑤ NATIVE BACKFILL
- ⑥ HOLE DEPTH PER SPECIFICATION FOR SENSOR PROBE SPIKE INSTALLATION
- ⑦ INSERT SENSOR PROBE SPIKES INTO UNDISTURBED SOIL
- ⑧ PRO SERIES SOIL SENSOR 'ARROW' POINTING IN UPWARD DIRECTION EITHER MOUNTED TO SIDE OF VALVE BOX OR WITH BASE PARTIALLY BURIED FOR SUPPORT



NOTES:

1. INSTALLATION TO BE COMPLETED IN ACCORDANCE WITH MANUFACTURER'S SPECIFICATIONS.
2. DO NOT SCALE DRAWING.
3. THIS DRAWING IS INTENDED FOR USE BY ARCHITECTS, ENGINEERS, CONTRACTORS, CONSULTANTS AND DESIGN PROFESSIONALS FOR PLANNING PURPOSES ONLY. THIS DRAWING MAY NOT BE USED FOR CONSTRUCTION.
4. ALL INFORMATION CONTAINED HEREIN WAS CURRENT AT THE TIME OF DEVELOPMENT BUT MUST BE REVIEWED AND APPROVED BY THE PRODUCT MANUFACTURER TO BE CONSIDERED ACCURATE.
5. CONTRACTOR'S NOTE: FOR PRODUCT AND COMPANY INFORMATION VISIT www.toro.com

PRO SERIES™ WIRELESS SOIL SENSOR VALVE BOX INSTALLATION